

UNIT, DIRECT SUPPORT, AND GENERAL SUPPORT MAINTENANCE
REPAIR PARTS AND SPECIAL TOOLS LIST
TRUCK, 5-TON, 6X6, M809 SERIES TRUCKS (DIESEL)

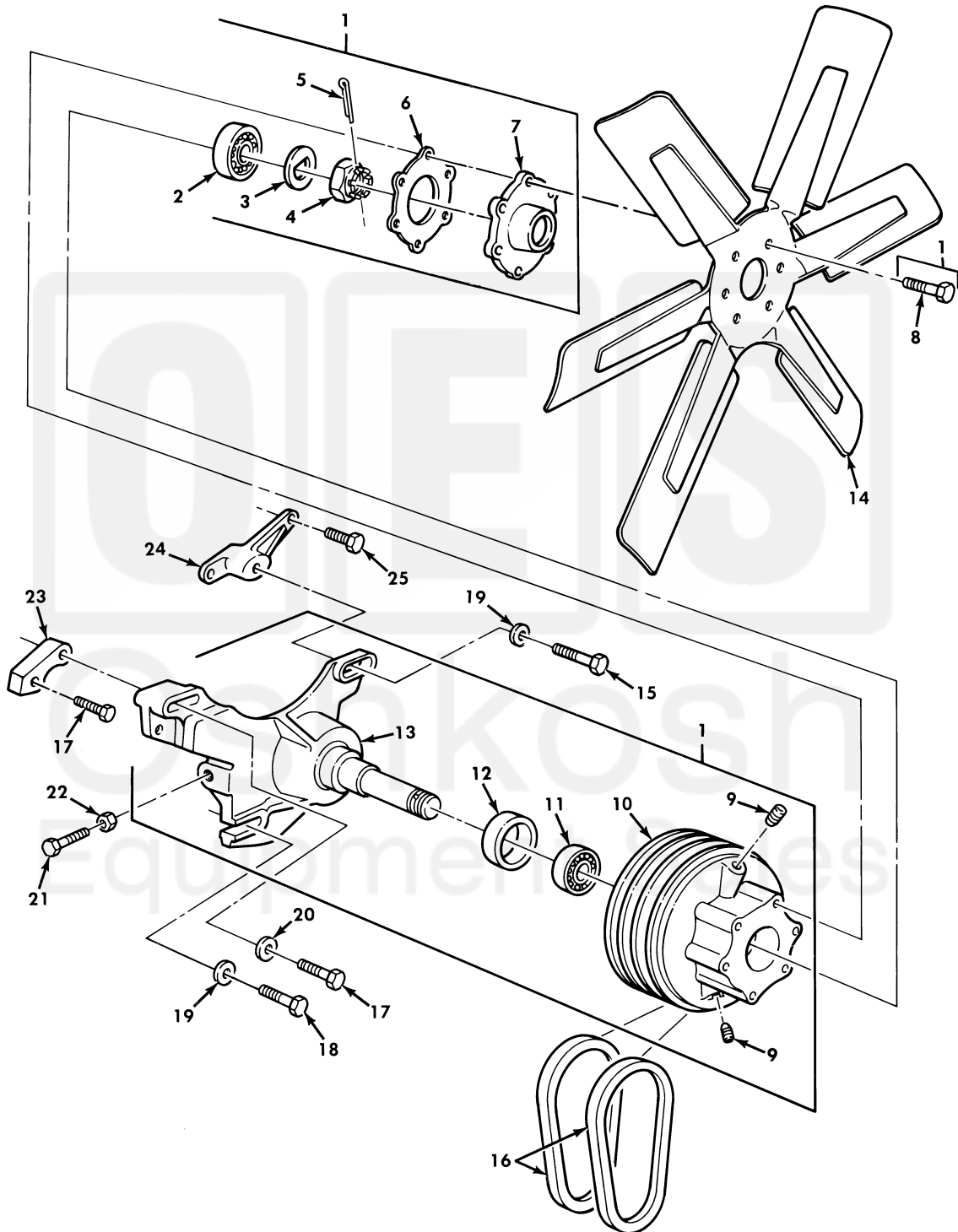


Figure 89. Fan, Bracket, Hub Assembly, Belts, and Mounting Hardware.

(1) ITEM NO	(2) SMR CODE	(3) NSN	(4) CAGEC	(5) PART NUMBER	(6) DESCRIPTION AND USABLE ON CODE (UOC)	(7) QTY
GROUP 0505 FAN ASSEMBLY						
FIG. 89 FAN, BRACKET, HUB ASSEMBLY, BELTS, AND MOUNTING HARDWARE						
1	PAOFF	2815-00-233-8152	15434	AR51335	BRACKET AND HUB FAN.....	1
2	PAFZZ	3110-00-081-3584	15434	116759	.BEARING, ROLLER, TAPE FRONT.....	1
3	PAFZZ	5310-00-062-9557	15434	146651	.WASHER, FLAT.....	1
4	PAFZZ	5310-00-062-9556	15434	146650	.NUT, SLOTTED, SPECIAL.....	1
5	PAFZZ	5315-00-238-7631	15434	S510	.PIN, COTTER.....	1
6	PAOZZ	5330-00-973-0040	15434	143108	.GASKET PART OF KIT P/N 3011472....	1
7	PAOZZ	2930-00-191-7045	15434	3050881	.PILOT, FAN HUB.....	1
8	PAOZZ	5305-01-112-4312	15434	3012472	.SCREW, CAP, HEXAGON H.....	6
9	PAFZZ	4730-00-018-9566	81348	WW-P-471ACABCA	.PLUG, PIPE.....	2
10	PPFZZ	3020-01-147-0062	15434	202318	.PULLEY, GROOVE.....	1
11	PAFZZ	3110-00-082-0444	15434	143116	.BEARING, ROLLER, TAPE.....	1
12	PAFZZ	5330-00-551-4007	15434	106276	.SEAL, PLAIN PART OF KIT P/N 3011472	1
13	PPFZZ	2815-01-155-0306	15434	AR51334	.BRACKET AND SHAFT, F.....	1
14	PAOZZ	2930-00-177-6822	19207	11664469	IMPELLER, FAN, AXIAL.....	1
15	PAOZZ	5305-00-890-3784	15434	S116C	SCREW, CAP, HEXAGON H.....	1
16	PAOZZ	3030-00-791-1357	15434	178634	BELTS, V, MATCHED SET.....	2
17	PAOZZ	5305-00-426-3023	15434	S-131C	SCREW, CAP, HEXAGON H.....	2
18	XBOZZ		15434	S115A	SCREW, CAP, HEXAGON H.....	1
19	PAOZZ	5310-01-242-4183	15434	3600283	WASHER, FLAT.....	2
20	PAOZZ	5310-00-486-2505	15434	108330	WASHER, FLAT.....	1
21	PAOZZ	5305-01-091-2498	15434	166777	SCREW.....	1
22	PAOZZ	5310-00-470-6154	15434	S285	NUT, PLAIN, HEXAGON.....	1
23	PAOZZ	3040-00-408-9405	15434	202317	PAWL.....	1
24	PAOZZ	2930-00-175-4687	15434	204621	SUPPORT, FAN HUB BR.....	1
25	PAOZZ	5305-01-028-8869	15434	S155	SCREW, CAP, HEXAGON H.....	1

END OF FIGURE

